



**Cable Id :**  
**Location A :** LOC A  
**Job Id :**

**Fiber Id :** Fiber 64  
**Location B :** LOC B  
**Technician Id :**

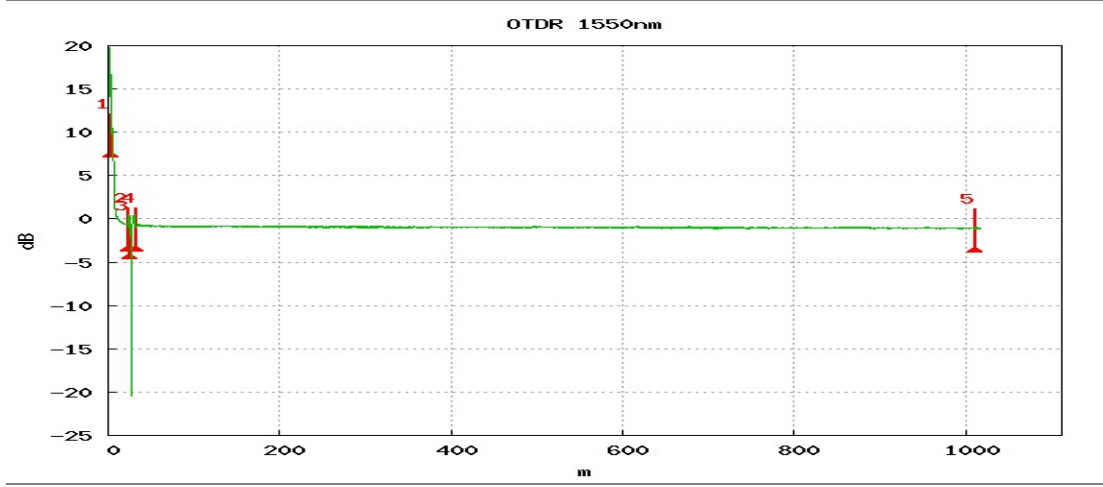


SmartOTDR (S/N 745)

E126A (S/N 745)

Date : 06/10/2018 06:55 pm

Setup	1550nm	10ns	1km	4cm	60.0s	1.46800	-81.0 dB
OTDR							
Alarms							
Thresholds	ISO/IEC 11801		Splice Loss (dB)		Slope (dB/Km)		
Connector Loss (dB)	>0.75		>0.30		>1.00		
Summary							
Filename	Laser nm	Link Loss dB	Link Orl dB	Fiber End m	Direction	Event	Alarms
CCR_RAWMATERIAL 2.sor	1550	1.069	40.38	1010.84	LOC A -> LOC B	5	✓



Event	Distance	Loss	Reflect.	T. Loss
	m	dB	dB	dB
1	4.15	0.550	-49.06	0.001
2	24.01	1.360	-71.82	0.556
3	26.21	-1.677	-74.95	1.915
4	33.07	0.622	-76.09	0.240
5	1010.84			1.069